

# OTDR Report (1310 nm (9 μm))

## General Information

File name:	67_1310.trc	Customer:	ADNOC
Test date:	14-Feb-24	Company:	PAN ARABIA
Test time:	2:51 PM	Fiber ID:	67
Cable ID:	FAR3 to FAR0 1A (B-A)		
Job ID:	0500831		
Comments:	END TO END TEST		

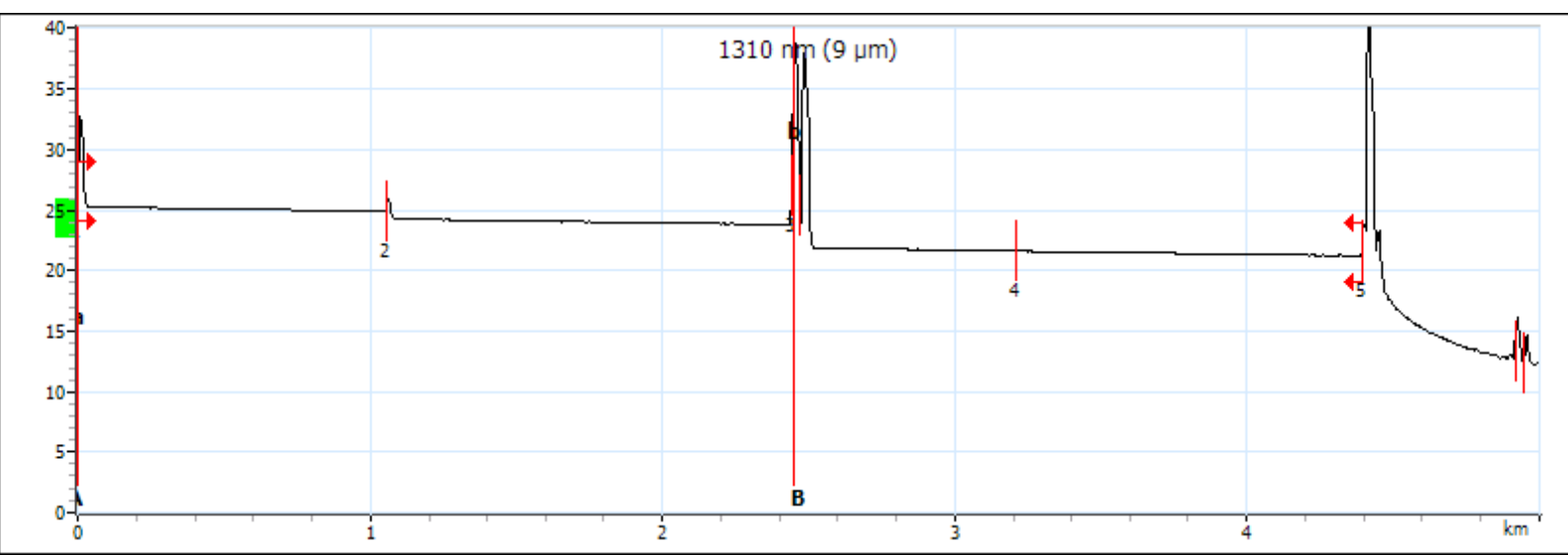
## Locations

	Location A	Location B
Location	FAR3	FAR0
Operator	PANDA	HABEEB
Model	MAX-720C-Q1-EA-EI	
Serial number	1206159	
Calibration date	29-Mar-23 (UTC)	

## Results

Span length:	4.3929 km	Average loss:	0.920 dB/km	Injection level:	25.3 dB
Span loss:	4.042 dB	Average splice loss:	0.029 dB		
Span ORL:	<26.28 dB	Maximum splice loss:	0.029 dB		

## Graph



## Markers

Marker	Position (km)	Value (dB)	A-B LSA attenuation:	0.809 dB/km	A-B average loss:	-6.245 dB/km
a	0.0000	25.471	A-B LSA loss:	1.982 dB	4-point Event Loss:	-16.160 dB
A	0.0000	25.471	A-B ORL:	34.02 dB	Maximum reflectance:	-28.6 dB
B	2.4505	40.773				
b	2.4505	40.773				

# OTDR Report (1310 nm (9 μm))

## Event Table

Type	No.	Pos./Length (km)	Loss (dB)	Reflectance (dB)	Attenuation (dB/km)	Cumulative (dB)
First Connector	1	0.0000	---	-44.2		0.000
Section		1.0564	0.365		0.345	0.365
Reflective	2	1.0564	0.637	-61.6		1.002
Section		1.3896	0.474		0.341	1.476
Merged Events	3	2.4460	1.877	> -24.6		3.353
Section		0.7666	0.286		0.374	3.639
Non-Reflective	4	3.2126	0.029			3.668
Section		1.1802	0.373		0.316	4.042
Reflective	5	4.3929	---	> -17.7		4.042
Section		0.5247	---		---	---
Reflective		4.9176	---	-52.8		---
Section		0.0313	---		---	---
Echo		4.9488	---	-56.7		---

## Macrobend

Position (km)	Delta Loss (dB)

## Pass/Fail Thresholds

	1310 nm (9 μm)

## Test Parameters

	A → B
Wavelength (nm)	1310 nm (9 μm)
Range (km)	5.0000
Pulse (ns)	100
Duration (s)	5

## Test Settings

	A → B	Macrobend Wavelengths	Macrobend Delta Loss (dB)
IOR	1.467700		
Backscatter (dB)	-79.45		
Helix factor (%)	0.00		
Splice loss detection threshold (dB)	0.020		
Reflectance detection threshold (dB)	-72.0		
End-of-fiber detection threshold (dB)	5.000		

# OTDR Report (1550 nm (9 μm))

## General Information

File name:	67_1550.trc	Customer:	ADNOC
Test date:	14-Feb-24	Company:	PAN ARABIA
Test time:	2:51 PM	Fiber ID:	67
Cable ID:	FAR3 to FAR0 1A (B-A)		
Job ID:	0500831		
Comments:	END TO END TEST		

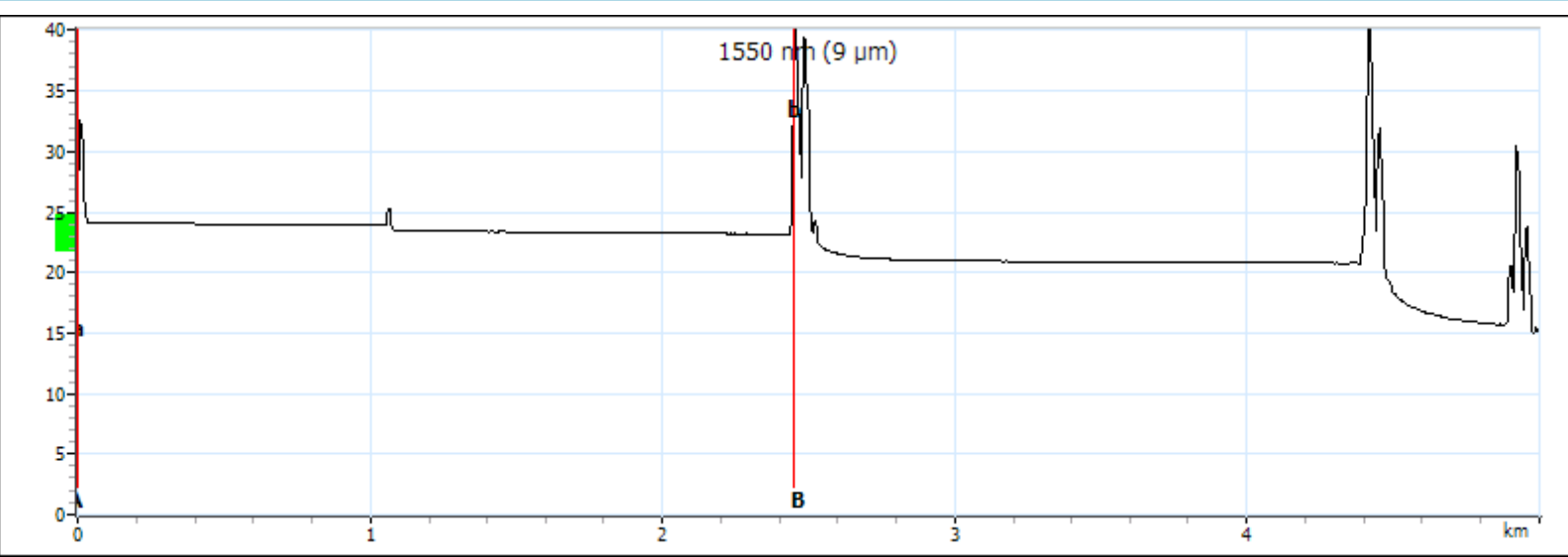
## Locations

	Location A	Location B
Location	FAR3	FAR0
Operator	PANDA	HABEEB
Model	MAX-720C-Q1-EA-EI	
Serial number	1206159	
Calibration date	29-Mar-23 (UTC)	

## Results

Span length:	---	Average loss:	---	Injection level:	---
Span loss:	---	Average splice loss:	---		
Span ORL:	---	Maximum splice loss:	---		

## Graph



## Markers

Marker	Position (km)	Value (dB)	A-B LSA attenuation: 0.556 dB/km A-B LSA loss: 1.362 dB A-B ORL: 0.00 dB	A-B average loss: -7.399 dB/km 4-point Event Loss: -18.621 dB Maximum reflectance: > -23.3 dB
a	0.0000	24.592		
A	0.0000	24.592		
B	2.4505	42.723		
b	2.4505	42.723		

## Event Table

Type	No.	Pos./Length (km)	Loss (dB)	Reflectance (dB)	Attenuation (dB/km)	Cumulative (dB)

# OTDR Report (1550 nm (9 μm))

## Macrobend

Position (km)	Delta Loss (dB)

## Pass/Fail Thresholds

	1550 nm (9 μm)

## Test Parameters

	A → B
Wavelength (nm)	1550 nm (9 μm)
Range (km)	5.0000
Pulse (ns)	100
Duration (s)	5

## Test Settings

	A → B	Macrobend Wavelengths	Macrobend Delta Loss (dB)
IOR	1.468325		
Backscatter (dB)	-81.87		
Helix factor (%)	0.00		
Splice loss detection threshold (dB)	0.020		
Reflectance detection threshold (dB)	-72.0		
End-of-fiber detection threshold (dB)	5.000		